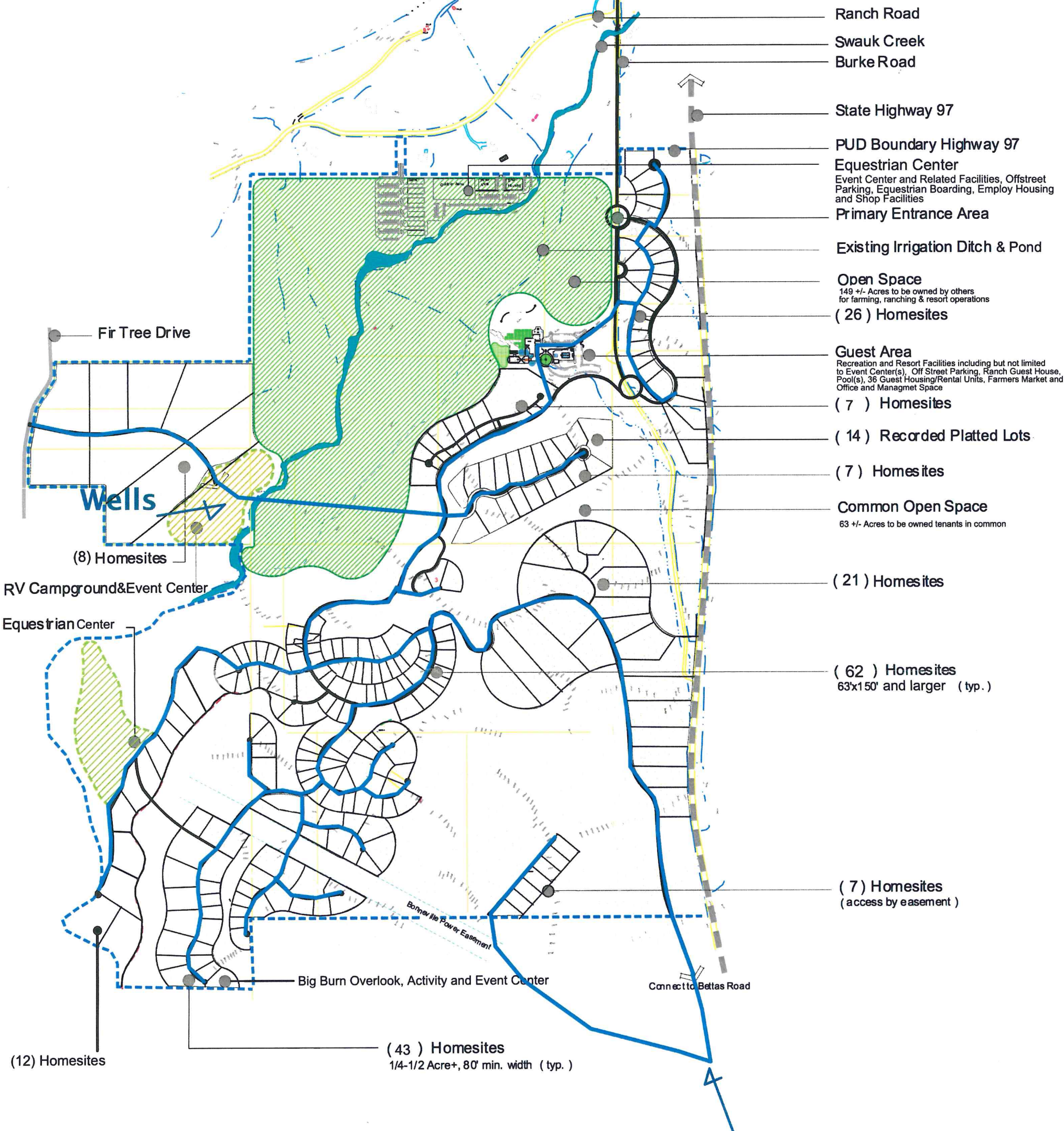


RECEIVED
 SEP 12 2016
 Kittitas County CDS



- Ranch Road
- Swauk Creek
- Burke Road
- State Highway 97
- PUD Boundary Highway 97
- Equestrian Center
Event Center and Related Facilities, Offstreet Parking, Equestrian Boarding, Employ Housing and Shop Facilities
- Primary Entrance Area
- Existing Irrigation Ditch & Pond
- Open Space
149 +/- Acres to be owned by others for farming, ranching & resort operations
- (26) Homesites
- Guest Area
Recreation and Resort Facilities including but not limited to Event Center(s), Off Street Parking, Ranch Guest House, Pool(s), 36 Guest Housing/Rental Units, Farmers Market and Office and Managment Space
- (7) Homesites
- (14) Recorded Platted Lots
- (7) Homesites
- Common Open Space
63 +/- Acres to be owned tenants in common
- (21) Homesites
- (62) Homesites
63'x150' and larger (typ.)
- (7) Homesites
(access by easement)

Conceptual Water Plan

Illustrative Master Plan

Ranch on Swauk Creek

A Planned Unit Development ♦ Kittitas County, Washington

Water Lines

P.U.D. Master Site Plan

Drawing Date: August 25, 2016

KBA Design Group

Kent Berryman, RLA
 3800 NE State Highway 104
 Poulso, Washington 98370
 360.620-4656 Email: KentBerryman@comcast.net www.kentberryman.com

